

# State of Wyoming Corner Record

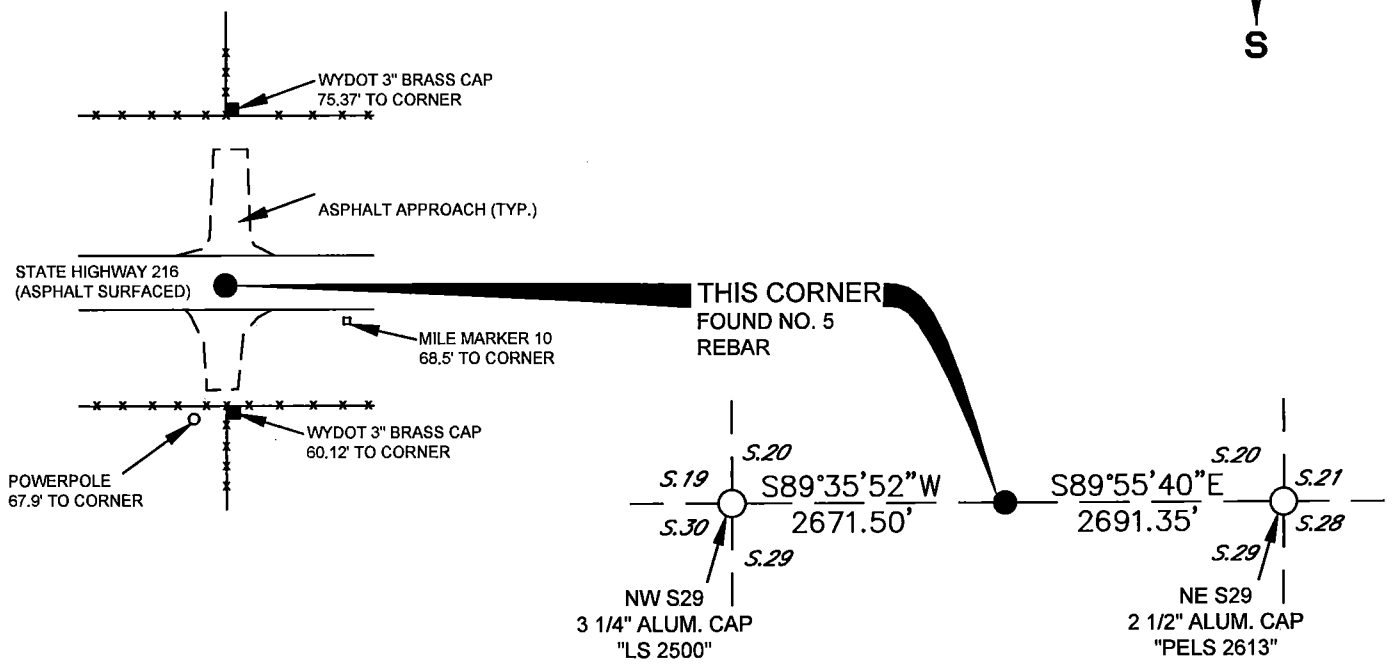
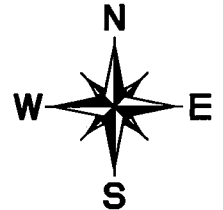
(In compliance with the **CORNER PERPETUATION AND FILING ACT**, Wyoming Statutes, 1997 Section 33-29-140 et. seq., and the Rules and Regulations of the Board of Professional Engineers and Professional Land Surveyors)

Record of original survey and citation of source of historical information (if corner is lost or obliterated). Description of corner monumentation evidence found and/or monument and accessories established to perpetuate the location of this corner. Sketch of relative location of monument, accessories, and reference points with course and distance to adjacent corner(s) (if determined in this survey).

**Original Record:** (Charles H Caton - 1873) Limestone 15x12x3 set 10 in deep marked 1/4 on N side for 1/4 sec cor

**Evidence Found:** No evidence of original stone. Found a No. 5 Rebar set in asphalt road, 4 inches below surface. Rebar is situated as shown below.

**Perpetuation:** I accepted the rebar as best evidence of the corner, no further perpetuation.



Date of Field Work: 06-24-2019 Office Reference: Book 48 Pg 11

## Cross Index Plat

1	2	3	4	5	6	7	8	9	10	11	12	13	14	15	16	17	18	19	20	21	22	23	24	25	
A																									A
B																									B
C	6	5	4	3	2	1																			C
D																									D
E																									E
F																									F
G	7	8	9	10	11	12																			G
H																									H
I																									I
J																									J
K																									K
L	18	17	16	15	14	13																			L
M																									M
N																									N
O																									O
P	19	20	21	22	23	24																			P
Q																									Q
R																									R
S																									S
T	30	29	28	27	26	25																			T
U																									U
V																									V
W																									W
X	31	32	33	34	35	36																			X
Y																									Y
Z																									Z
	1	2	3	4	5	6	7	8	9	10	11	12	13	14	15	16	17	18	19	20	21	22	23	24	25



This corner record was prepared by me or under my direction and supervision.

**BRIAN L. SCHMALZ**  
PLS 11268

PO BOX 502 | 135 PINE STREET  
BUFFALO, WY 82834 | 307.684.1200



**RECP #: 761633**  
**RECORDED 9/16/2019 AT 2:10 PM BK# 2638 PG# 690**  
Debra K. Lee, CLERK OF LARAMIE COUNTY, WY PAGE 1 OF 1